

1) CONSTRUCTION:

CONDUCTOR: 24 AWG 7/32 STRANDED TINNED COPPER
 INSULATION: HIGH DENSITY POLYETHYLENE, .0075" NOM. WALL THICKNESS
 CABLE: (2) COLOR CODED SINGLES TWISTED TOGETHER TO FORM A CABLE CORE. (32 ± 2 TWISTS EVERY 2 FEET.)
 JACKET: POLYVINYLCHLORIDE, (COLOR, PER CHART 1), .021" NOM. WALL THICKNESS OVERALL CABLE DIAMETER

NOM. DIA.
 .024"
 .039"
 .078"
 .120" MAX.
 (BY CALIPER)

2) PHYSICAL PROPERTIES:

TEMPERATURE RATING, MAX. 60°C & 75°C
 TEMPERATURE RATING, MIN. -20°C
 WT./M', NOM., NET. 7.77 LBS.
 CHART 1:

| QUABBIN P/N | JACKET COLOR |
|-------------|--------------|
| 5100 | BLACK |
| 5101 | BROWN |
| 5102 | RED |
| 5103 | ORANGE |
| 5104 | YELLOW |
| 5105 | GREEN |
| 5106 | BLUE |
| 5107 | VIOLET |
| 5108 | GRAY |
| 5109 | WHITE |
| 5110 | BEIGE |
| 5112 | PINK |

3) ELECTRICAL CHARACTERISTICS:

SEE PAGE 2

4) AGENCY APPROVALS:

NEC (UL) TYPE CM/CMG
 CEC C(UL) TYPE CM/CMG

5) APPLICATION:

RoHS COMPLIANT MATERIALS.

6) PRINT:

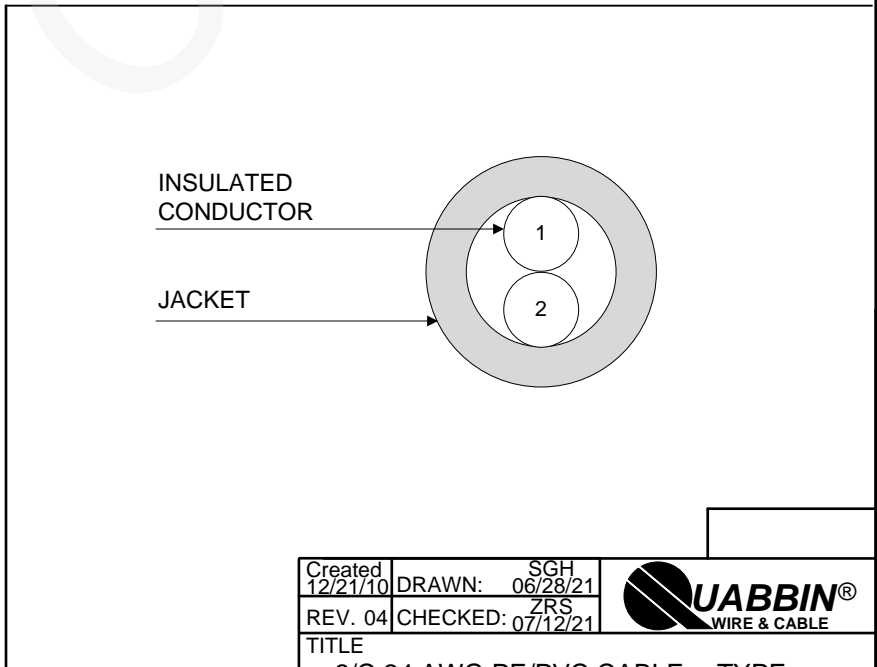
QUABBIN DATAMAX 5E 350 MHZ (P/N PER CHART 1) TYPE CM C(UL)US CMG 24 AWG 75C -- FT4/IEEE 1202 -- TIA-568.2-D CATEGORY 5e -- RoHS -- (LOT DESIGNATOR) (SEQUENTIAL FOOTAGE)

7) COLOR CODE:

1. WHITE/BLUE
2. BLUE

8) PACKAGING:

TO BE PACKAGED AS PER QWC'S STANDARD PACKAGING



CUSTOMER APPROVAL:

DATE:

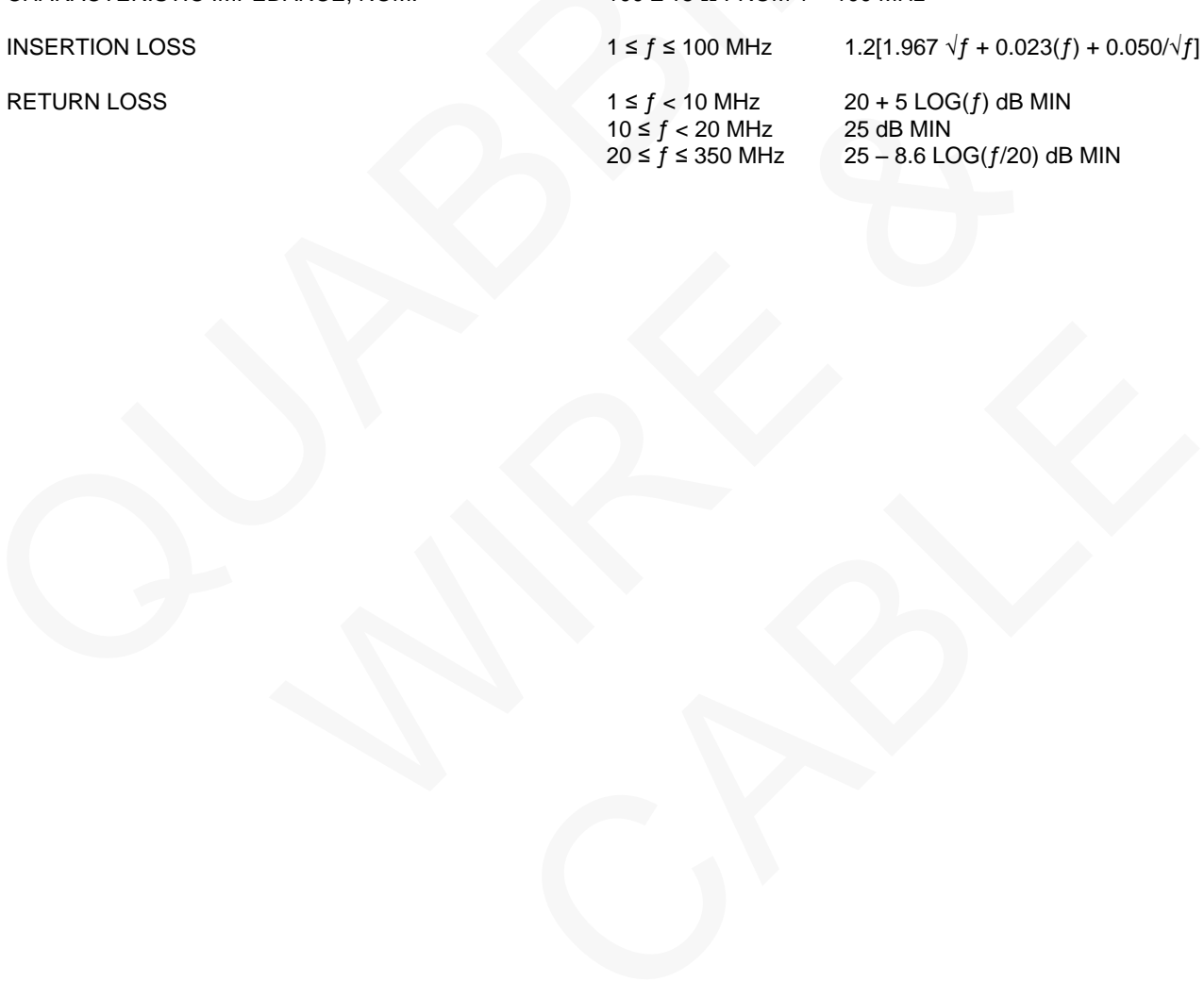
| | | |
|---|--------------------------|--------|
| Created 12/21/10 | DRAWN: SGH 06/28/21 | |
| REV. 04 | CHECKED: ZRS 07/12/21 | |
| TITLE 2/C 24 AWG PE/PVC CABLE -- TYPE C(UL)US CM/CMG | | |
| DRAWING#: QWC0008 | | 1 of 2 |

3) ELECTRICAL CHARACTERISTICS:

| | |
|-------------------------------------|--------------|
| CAPACITANCE, MUTUAL, NOM. | 15 PF/FT. |
| DIELECTRIC WITHSTANDING, MIN. | 1500V RMS |
| VOLTAGE RATING, MAX. | 300V |
| D.C. RESISTANCE, MAX. PER ASTM B286 | 26.2 Ω/1000' |


NOTE: TESTING FOR THE FOLLOWING IS CONDUCTED OFF THE REEL.

| | | |
|--------------------------------|-----------------------------|--|
| CHARACTERISTIC IMPEDANCE, NOM. | 100 ± 15 Ω FROM 1 – 100 MHz | |
| INSERTION LOSS | 1 ≤ f ≤ 100 MHz | 1.2[1.967 √f + 0.023(f) + 0.050/√f] dB MAX |
| RETURN LOSS | 1 ≤ f < 10 MHz | 20 + 5 LOG(f) dB MIN |
| | 10 ≤ f < 20 MHz | 25 dB MIN |
| | 20 ≤ f ≤ 350 MHz | 25 – 8.6 LOG(f/20) dB MIN |



CUSTOMER APPROVAL:

DATE:

| | | |
|--|--------------------------|---|
| Created 12/21/10 | DRAWN: SGH 06/28/21 |  |
| REV. 04 | CHECKED: ZRS 07/12/21 | |
| TITLE 2/C 24 AWG PE/PVC CABLE -- TYPE C(UL)US CM/CMG | | |
| DRAWING#: QWC0008 | | 2 of 2 |